



PAD

L O N D O N

ART + DESIGN

14 - 19 October 2025
Stand B27

SARAH MYERSCOUGH GALLERY

ALDO BAKKER



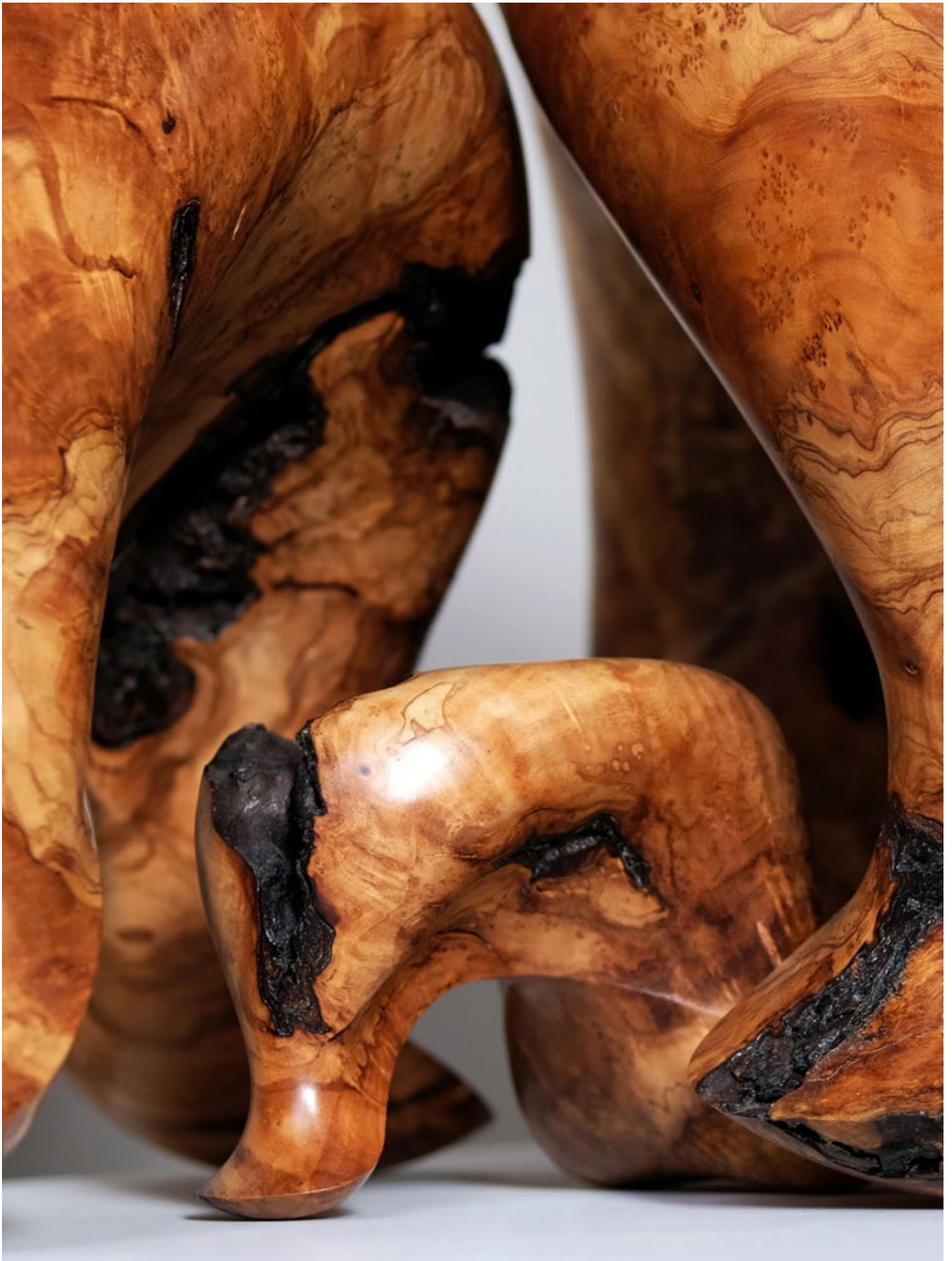
Aldo Bakker is a Dutch designer whose quietly radical practice explores the autonomy of form and the sensory dialogue between object and user. Largely self-taught, he creates independent editions and commissions for Georg Jensen, Sèvres, Puiforcat, Swarovski, Karakter and others, with works held in major public collections including the Rijksmuseum, Amsterdam; Centre Pompidou, Paris; mudac, Lausanne; Vitra Design Museum, Weil am Rhein; Victoria and Albert Museum, London; Stedelijk Museum, Amsterdam; Cooper Hewitt, New York; Museum Boijmans Van Beuningen, Rotterdam; Die Neue Sammlung, Munich; and the Philadelphia Museum of Art, among many private collections worldwide. His exhibitions span Pause at CID Grand-Hornu and mudac (2016–17), Thing Nothing at the Van Abbemuseum (2015), Imprimer le Monde at Centre Pompidou (2017), Small Wonders and Asian Bronze at the Rijksmuseum (2017, 2024), Specific Objects at Kunstraum Zug (2023), and Slow Motion at Carpenters Workshop Gallery in Paris and New York (2019–20), alongside presentations at Design Miami/Basel, PAD London, and TEFAF Maastricht. His work is the subject of the monograph Aldo Bakker (NAI010, 2016) and Seven Logics of Sculpture (2023), and has earned accolades including the Wallpaper* Design Award and the Dutch Design Award.



Tonus (Olive Family), 2022
Olive wood

Largest
50 H x 45 W x 38 D cm
19.6 H x 17.7 W x 14.9 D in

€52,000 EUR ex. VAT
€62,400 EUR inc. VAT



Tonus (Olive Family), 2022
Olive wood



Tonus (Olive Family), 2022
Olive wood

JULIAN WATTS



Julian Watt's work has been shown internationally in recent solo exhibitions. He has participated in numerous art and design fairs, including Design Miami/Basel, Fog Fair, and The London Design Festival, and has had work exhibited in the London Design Museum, and the San Jose Institute of Contemporary Art. His work has been featured in The Wall Street Journal, The Financial Times, Architectural Digest, The New Yorker, and American Craft Magazine, among other publications. He was shortlisted for the Loewe Craft Prize in 2018. He has taught courses at Haystack Mountain School of Crafts and Anderson Ranch, and was the Wornick Distinguished Visiting Professor of Wood Arts at the California College of the Arts.



Edition of 4 plus 2 artist's
proofs (#1/4)

Stack Lamp, 2025
Bronze, glass

Edition of 4 (#1/4)
Plus 2 artist's proofs

35.5 H x 43 W x 43 D cm
14 H x 17 W x 17 D in

\$15,400 USD ex. VAT
\$18,500 USD inc. VAT





Web Lamp, 2025
Bronze, glass

Edition of 4 (#1/4)
Plus 2 artist's proofs

53 H x 43 W x 35.5 D cm
21 H x 17 W x 14 D in

\$22,800 USD ex. VAT
\$27,400 USD inc. VAT



Web Lamp, 2025
Bronze, glass



Stick Lamp, 2025
Bronze, glass

Edition of 4 (#1/4)
Plus 2 artist's proofs

68.5 H x 23 W x 23 D cm
27 H x 9 W x 9 D in

\$22,800 USD ex. VAT
\$27,400 USD inc. VAT

MARC FISH



Marc Fish's work is part of prestigious international collections and has been exhibited extensively in the UK and USA including at TEFAF Maastricht, Design Miami, PAD London and FOG San Francisco. He has been awarded four Guild Marks by The Worshipful Company of Furniture Makers UK and won the Claxton Stevens Award in 2011 for the best Guild Mark of 2010. In 2015, Marc took first prize at the Cheltenham Celebration of Craftsmanship and Design in the UK. Most recently, Marc's work was part of the Biophilia: Nature Reimagined group exhibition at the Denver Art Museum, USA, 2024.



Kasumi Uchi One Piece Console, 2025
Oak, bronze, aluminium, black lacquer

96 H x 150 W x 30 D cm
37.7 H x 59 W x 11.8 D in

£24,500 GBP ex. VAT
£29,400 GBP inc. VAT



NIC WEBB



Internationally renowned artist Nic Webb is based in East Sussex, on the UK's southern coast. Deeply influenced by his surrounding landscape, his studio is situated within a historic 15th century tithe barn setting. His work sits at the forefront of British craft and has been widely exhibited across the UK, USA and Europe, including presentations at Galerie56, New York, and Homo Faber, Venice. His practice spans both sculpture and lighting, most notably his seminal collection of carved English oak pendants. Webb's works are held in major private collections worldwide and have been shown at leading international fairs including Design Miami, PAD London, FOG Design + Art and TEFAF Maastricht.



Kumo Pendant, 2025
English oak

105 H x 40 W x 56 D cm
41.3 H x 15.7 W x 22 D in

£31,900 + £1,800 GBP for standard fittings ex. VAT
£38,300 + £2,160 GBP for standard fittings inc. VAT

Kanso (table), 2025
English oak

45 H x 125 W x 42 D cm
17.7 H x 49.2 W x 16.5 D in

£16,625 GBP ex. VAT
£19,950 GBP inc. VAT



Kumo Pendant, 2025
English oak

ELEANOR LAKELIN



Eleanor Lakelin's sculptures have been acquired by the Museum of Arts and Design, New York, USA; Victoria & Albert Museum, UK; Museum of London, UK; Mint Museum of Craft and Design, USA; the National Museum in Oslo, Norway; and The Loewe Foundation. Most recently, in 2024, her work was acquired by the Museum of Decorative Arts, Norway, and the University for the Creative Arts, Farnham, UK. Lakelin's works exhibited in seminal exhibitions such as *Last Night, I Dreamt Of Manderley* at Alison Jacques Gallery, London, curated by Daniel Malarkey; 2024, and the *Extinction Collection* which toured at The Dundas Street Gallery, Edinburgh, and with The Fine Arts Society, London; 2024. Major commissions include the Reading Museum project supported by the CAS Rapid Response Fund and Frieze London, 2020. She has also been recognised with numerous accolades, including the 2018 QEST Scholarship, the 2017 British Wood Awards (Bespoke Category), and as a finalist in the 2022 Loewe Craft Prize.



Matrix #1, 2025
Horse Chestnut Burr, bleached

70 H x 70 W x 10 D cm
27.5 H x 27.5 W x 3.9 D in

£16,200 GBP ex. VAT
£19,500 GBP inc. VAT



Matrix #1, 2025
Horse Chestnut Burr, bleached



Jar #2, 2024
Horse Chestnut Burr, bleached

53 H x 56 W x 56 D cm
20.8 H x 22 W x 22 D in

£15,500 GBP ex. VAT
£18,600 GBP inc. VAT

CHRISTOPHER KURTZ



Christopher Kurtz has gained international attention for his sculpture and studio furniture, which is included in significant private collections. The artist was shortlisted for the Loewe Craft Prize 2018 with a signature wooden sculptural work. He received the prestigious Louis Comfort Tiffany Award in 2005, and in 2007 he received a New York Foundation for the Arts (NYFA) Award (Lily Auchincloss fellow). He has exhibited as part of Against the Grain: Wood in Contemporary Art, Craft and Design at the Museum of Arts and Design, USA. In 2020, he exhibited in "Objects USA 2020" R&Company, New York. His work has been shown at numerous international art and design fairs, including TEFAF Maastricht, Design Miami, PAD and FOG.



Sheets Desk, 2025
Hand Carved Walnut, oil & wax finish

74 H x 160 W x 66 D cm
29 H x 63 W x 26 D in

\$49,500 USD ex. VAT
\$59,400 USD inc. VAT



Sheets Desk, 2025
Hand Carved Walnut, oil & wax finish



Sheets Chair, 2025
Hand carved walnut, oil, wax finish

86 H x 43 W x 46 D cm
34 H x 17 W x 18 D in

\$19,500 USD ex. VAT
\$23,400 USD inc. VAT

ERNST GAMPERL



Ernst Gamperl won the inaugural Loewe Craft Prize (2017) in recognition of his masterful craftsmanship. His work has been acquired by the Victoria and Albert Museum in UK, The Loewe Foundation in Madrid, Fonds National d'Art Contemporain in France, Musée des Arts Décoratifs de la Ville de Lausanne in Switzerland, Die Neue Sammlung – The Design Museum in Munich, Collection Issey Miyake in Tokyo, and the Amorepacific Museum of Art in Seoul. Exhibition highlights include his touring solo exhibition *Tree of Life Project*, which opened at the Gewerbemuseum Winterthur in Switzerland - *Dialogue with Wood* (2019), which travelled to the Korean Craft Museum (2020), and at the Bayerisches Nationalmuseum in Munich (2025), and will open at the Museum für Kunst und Gewerbe in Hamburg (2025). He has also exhibited at leading international fairs including Design Miami, PAD London, FOG Design+Art in San Francisco, and Masterpiece London.



54/2025//240, 2025
Ash, steel base

105 H x 40 W x 56 D cm
41.3 H x 15.7 W x 22 D in

€45,800 EUR ex. VAT
€55,000 EUR inc. VAT



56/2025//250, 2025
Oak, steel base

190 H x 23.5 W x 32.5 D cm
74.8 H x 9.2 W x 12.7 D in

€66,500 EUR ex. VAT
€79,800 EUR inc. VAT

WYCLIFFE STUTCHBURY



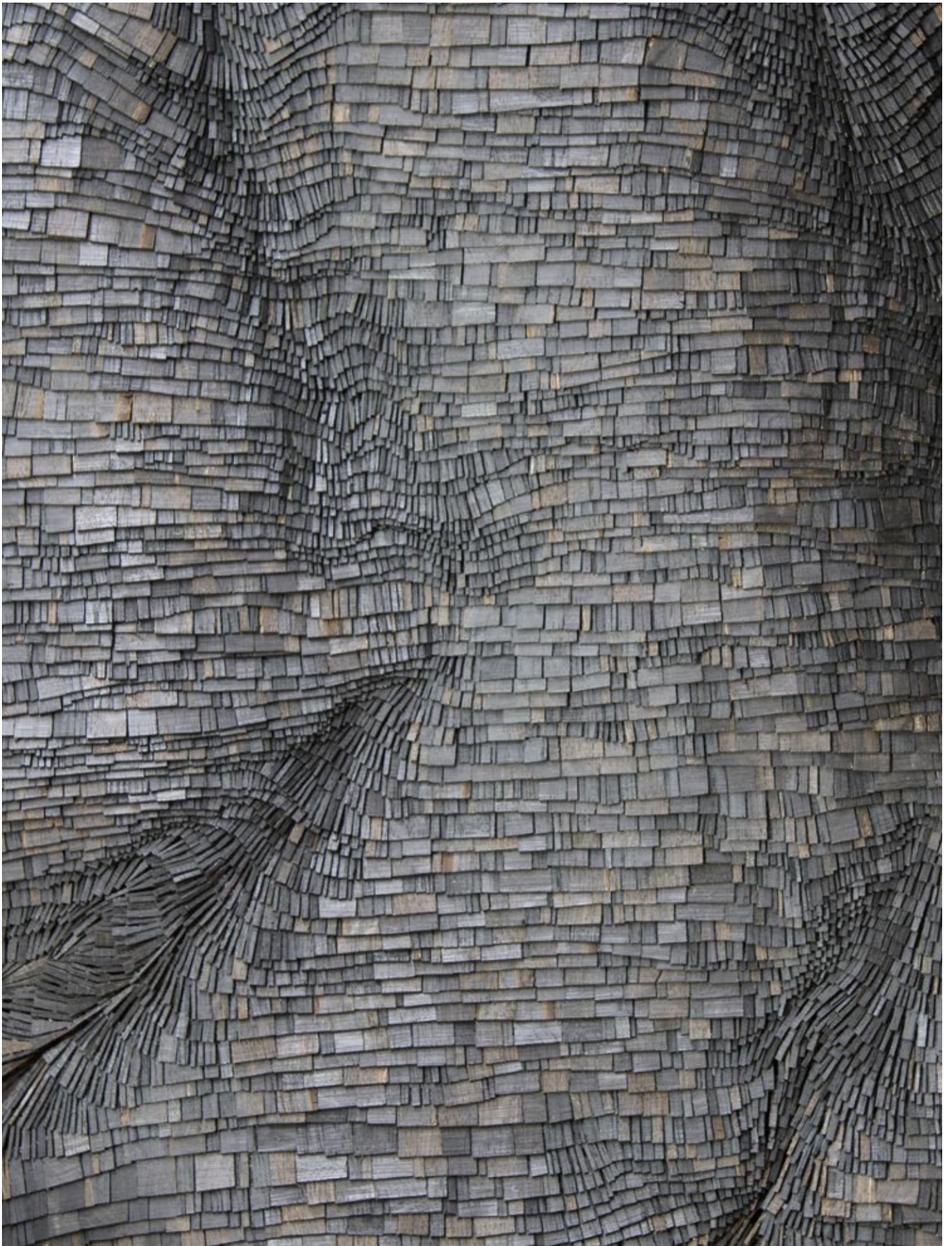
Wycliffe Stutchbury studied at the London College of Furniture and subsequently worked for 25 years as a furniture maker. In 2003, he graduated from the University of Brighton with a BA in 3D Craft and co-founded the Blue Monkey Studio, a collective of Eastbourne based artists, in the same year. The artist has exhibited extensively in the UK and the US and has significant works in international private collections. He has received several notable awards, from the Crafts Council UK and the Worshipful Company of Furniture Makers UK. In 2018, Wycliffe was shortlisted for the Loewe Craft Prize, in 2021 Wycliffe won the bespoke category in the British Wood Awards, and most recently in 2025 received Honourable Mention for his architectural project 'The Craig' in the Design Educates Award.



Holme Fen 6, 2025
Handsawn excavated bog oak

70 H x 64 W cm
27.5 H x 25.1 W in

£13,500 GBP ex. VAT
£14,850 GBP inc. s/s VAT



Holme Fen 6, 2025
Handsawn excavated bog oak

ASH & PLUMB



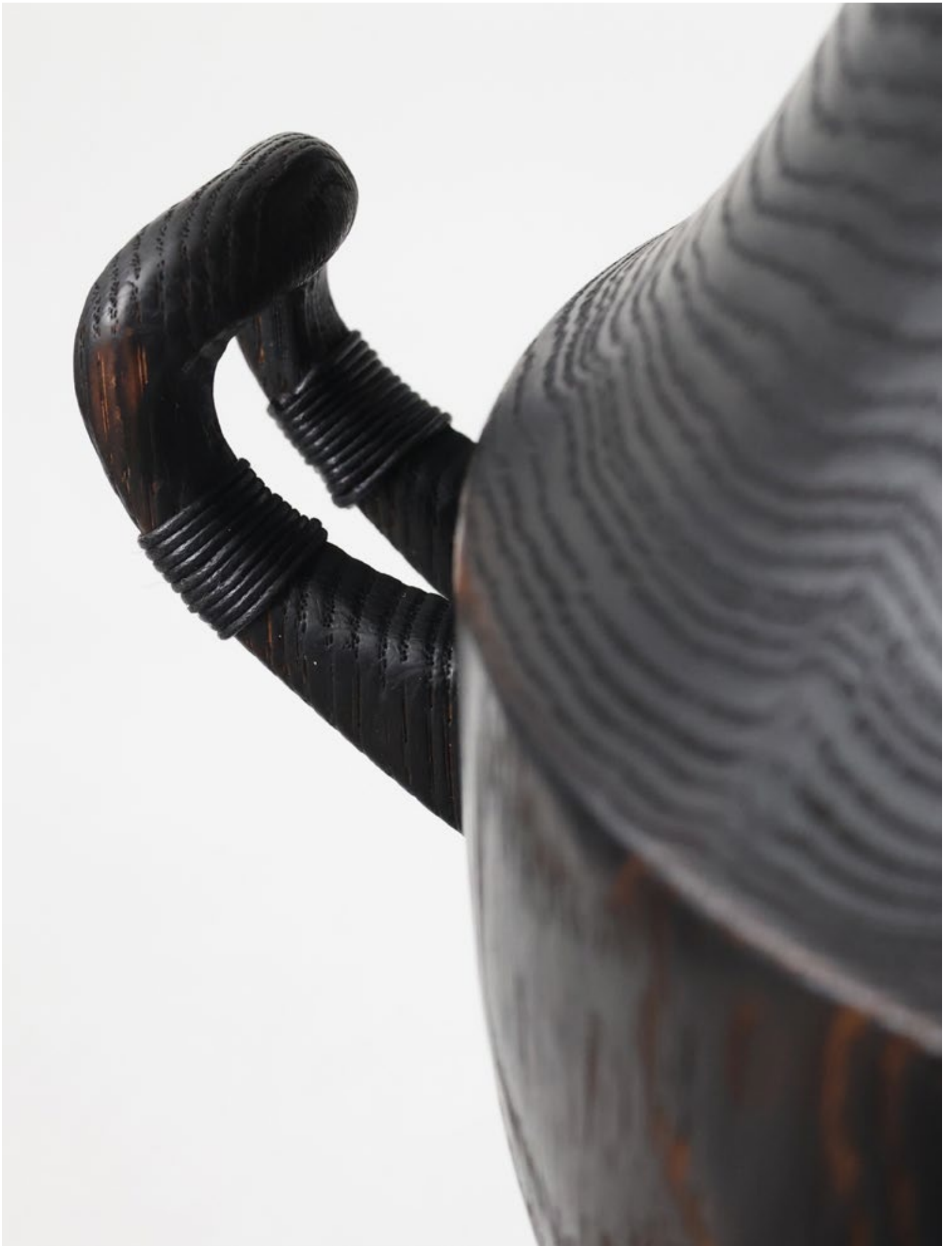
Ash & Plumb are a British studio founded by Barnaby Ash and (co-founder) Plumb, celebrated for their sculptural vessels and carved wood forms. Their work has been acquired by the National Museums of Scotland and by Brighton Museum through the Contemporary Art Society (2024–25). They were finalists for the QEST x Sanderson Rising Star Award (2024) and Barnaby Ash was awarded a QEST x Turners' Company Scholarship (2022). Exhibition highlights include Journey of Life at Homo Faber in Venice (2024), and The Scottish Gallery, Edinburgh (2024), as well as presentations at London Craft Week, Collect at Somerset House, and Wizardry in Wood at Plaisterer's Hall, London. They have also been shown at Messums Wiltshire, and in curated programmes with The New Craftmaker - sister gallery to Sarah Myerscough Gallery.



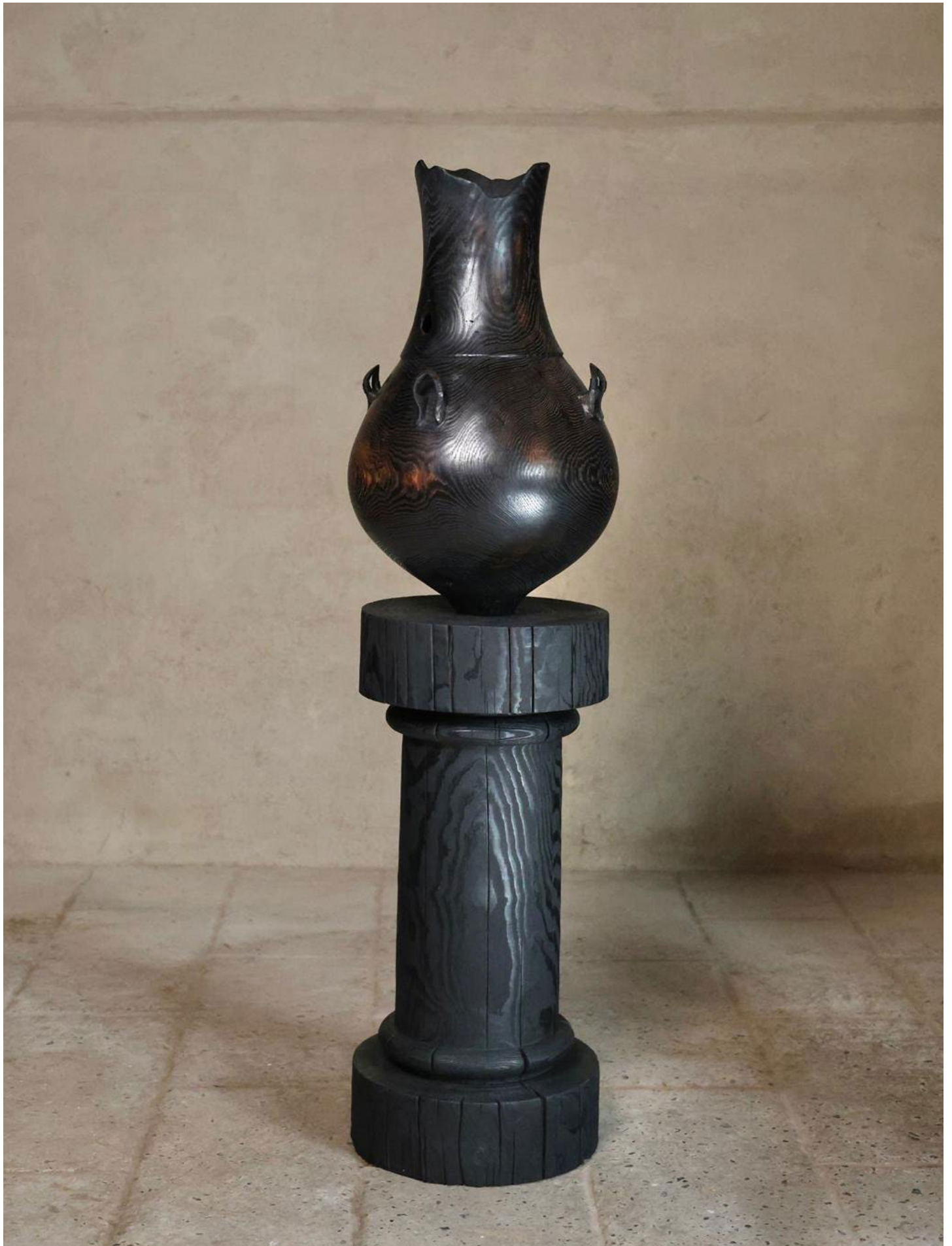
Pentad (Group of 5), 2025
English oak, waxed cotton thread

Largest
34 H x 28 dia cm
13.3 H x 11 dia in

£12,920 GBP ex. VAT
£15,500 GBP inc. VAT



Pentad (Group of 5), 2025
English oak, waxed cotton thread



Amphora Elata, 2024
English oak, waxed cotton thread

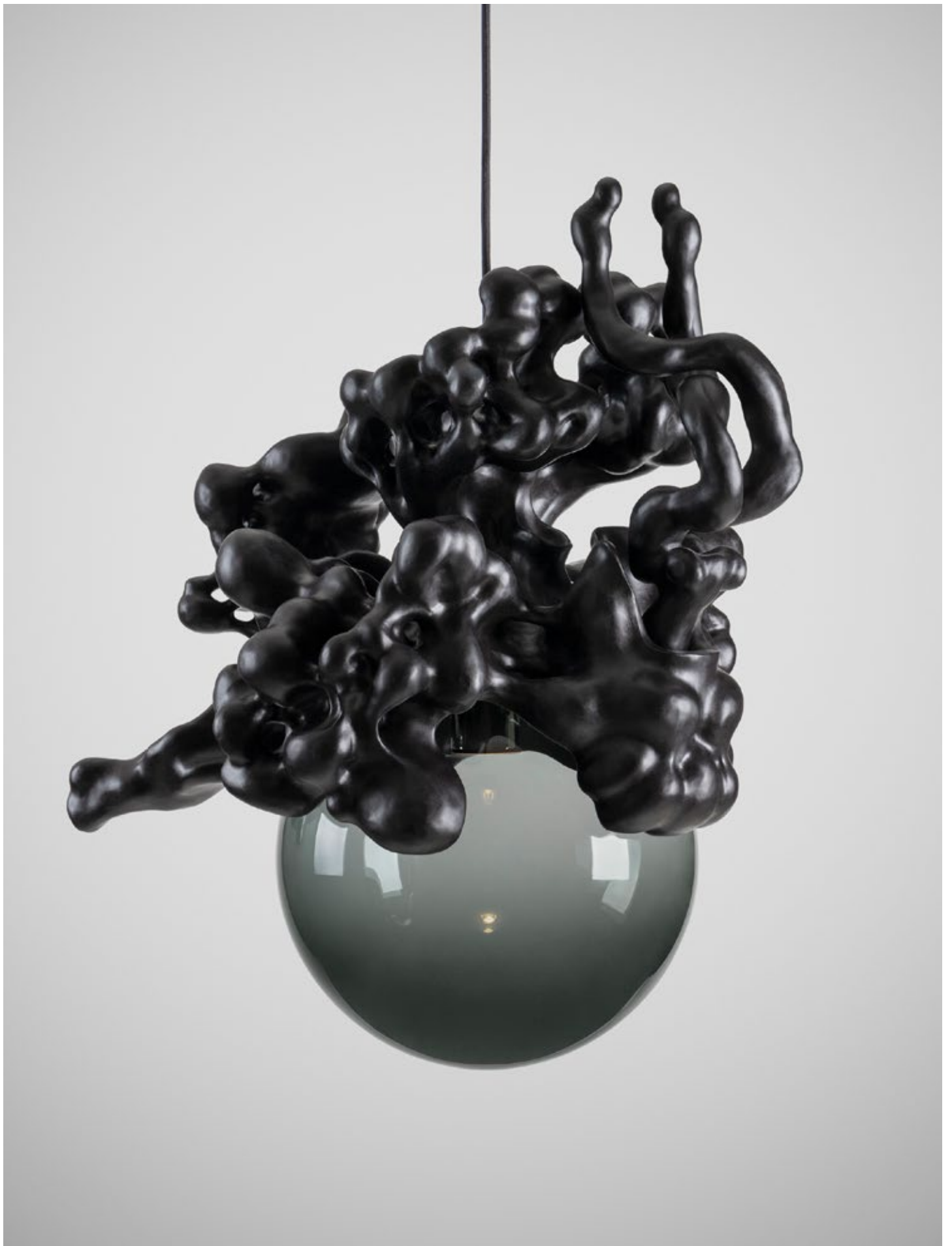
61 H x 36 dia cm
24 H x 14.1 dia in

£7,500 GBP ex. VAT
£9,000 GBP inc. VAT

TADEÁŠ PODRACKÝ



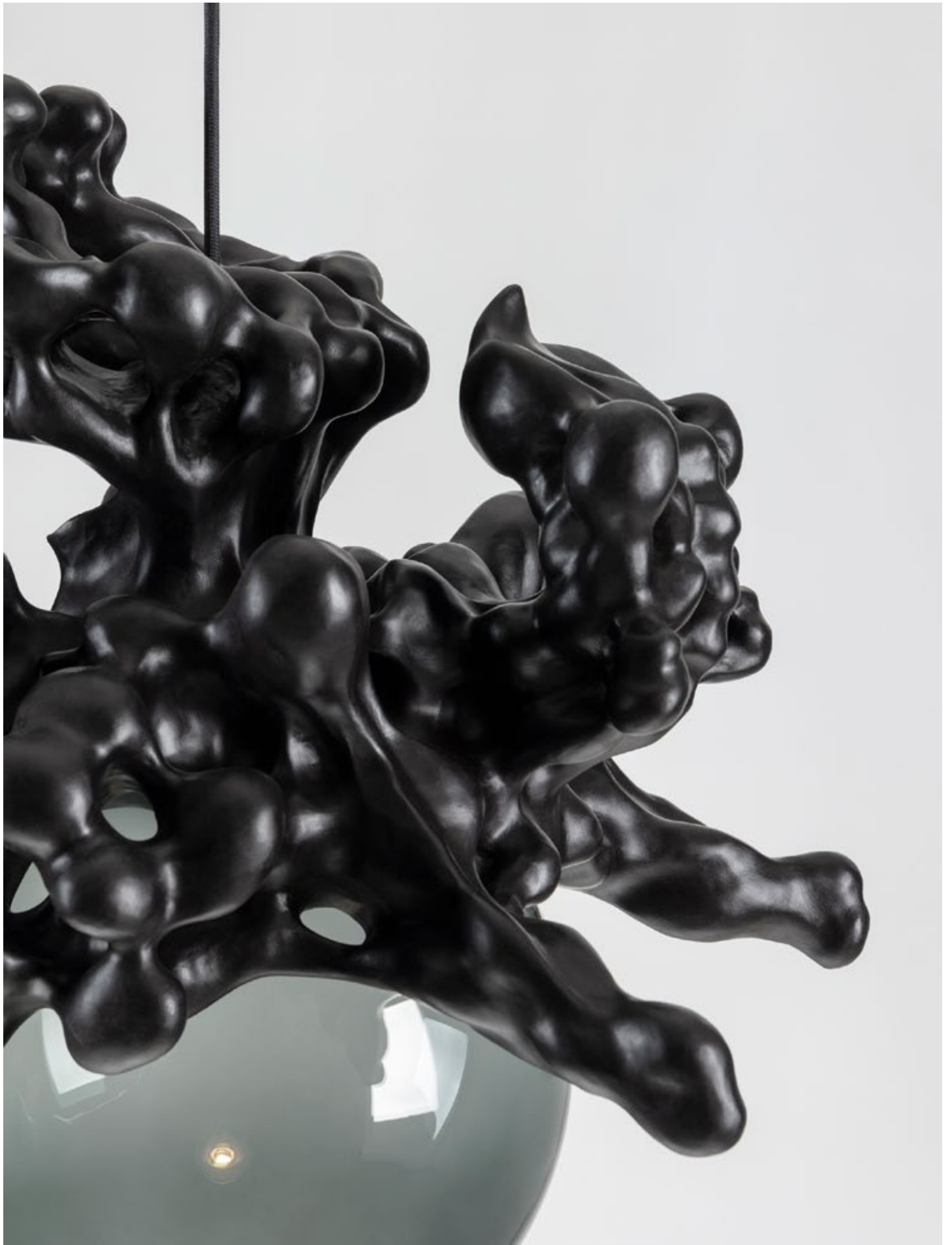
Tadeáš Podrcký's work is exhibited internationally and has been showcased at Design Miami, Basel; FOG Design+Art, San Francisco; Maison et Objet, Paris; Mint Gallery, London; Mudac Museum, Lausanne; Het Nieuwe Instituut, Netherlands; Designblok, Prague; Salone del Mobile, Milan; London Design Festival; and the Venice Design Biennial. His work is included in significant private and public collections, and he has participated in residencies such as Schloss Hollenegg for Design, Austria; Venice Design Biennial Residency, Italy; the Creative Glass Center of America, USA; FROM YUHANG RONG DESIGN LIBRARY, China; and TonLab, Prague. He holds Master's degrees from the Design Academy Eindhoven and the Academy of Arts, Architecture and Design in Prague, and has studied at the School of Visual Arts, New York, and the Academy of Fine Arts in Prague. In 2023, he began co-leading the K.O.V. (Concept – Object – Meaning) studio at the Academy of Arts, Architecture and Design in Prague.



The Bloom of Bones Light (Dark), 2025
Ebonised maple wood, glass, metal

65 H x 45 W x 50 D cm
25.6 H x 17.7 W x 19.7 D in

€21,950 EUR ex. VAT
€26,350 EUR inc VAT



The Bloom of Bones Light (Dark), 2025
Ebonised maple wood, glass, metal

ARKO



Arko lives and works in Japan. She has exhibited internationally in Quiet Vitality at **SOMEWHERE TOKYO** (2025); LOEWE Crafted World at Yodobashi J6, Tokyo (2025) and the Shanghai Exhibition Center, Shanghai (2024); Shades of Light at Galerie56 x Sarah Myerscough Gallery, New York (2024); Reframing at World Kitaooyama Building, Tokyo (2024); Laboratorium For Flet on Wickerwork at Sophienholm Art Gallery, Copenhagen (2024); Material, or at 21_21 DESIGN SIGHT, Tokyo (2023); Straw and Life at **SOMEWHERE TOKYO** (2023); and LOEWE Weaves at Sotheby's, New York (2021). In 2018 she was shortlisted for the Loewe Craft Prize and exhibited at the Design Museum, London. Earlier exhibitions include Changing Attitude at Japan House, Tokyo (2019); Loewe Baskets during Milan Design Week, Italy (2019); Object Come from the Earth at Gallery Utsuwakan, Kyoto (2018); and Say No to Limits at the National Museum of China, Beijing (2007).



A Gust of Wind on The Cliff, 2024
Rice straw

141 H x 118 W x 10 D cm
55.5 H x 46.4 W x 3.9 D in

\$33,300 USD ex. VAT
\$39,500 USD inc. VAT



A Gust of Wind on The Cliff, 2024
Rice straw

KATRIEN DOMS



Katrien Dom's woodworking is defined by her poetic Ukiyo series, working outdoors year-round, allowing the weather to influence and shape her work. Beginning with green wood, the artist subjects the material to open-flame charring, using the traditional yet unpredictable technique of fire-scorching. This process generates fluid, organic contours, as the heat warps and cracks the surface, revealing the raw expressiveness of the material. Doms worked as an Interior Architect for over two decades, collaborating with exceptional craftspeople but at the same time growing increasingly concerned about the diminishing value of expert design and craft in contemporary society. She now devotes her time to woodworking, exhibiting her work internationally at FOG San Francisco, COLLECT, Masterpiece, and PAD London.



Ubuntu, 2025
Solid soft wood sculpted

121 H x 71 W x 8 D cm
47.6 H x 27.9 W x 3.1 D in

€18,800 EUR ex. VAT
€22,600 EUR inc. VAT



Ubuntu, 2025
Solid soft wood sculpted

ANETA REGEL



Aneta Regel is a graduate of the Royal College of Art, UK. Her work is held in international public collections including the Metropolitan Museum of Art in New York, The Westerwald Museum, Germany; Handelsbankens Konstförening, Sweden; World Ceramics Museum, Icheon, Korea and the Carnegie Museum of Art, USA. She has shown at the Tate Modern, Feb Laznia Center of Contemporary Arts in Poland and the Saatchi Gallery, as well as at PAD London, Masterpiece and Design Miami. The artist was shortlisted for the Loewe Craft Prize in 2018 and has received several notable awards, including the Crafts Council Development Award and the Excellence Award at the World Ceramics Biennale in Icheon, Korea, 2020. She was accepted as a member of the Royal British Society of Sculptors in 2014.



Iceberg, 2025
Porcelain, stone, glaze

47 H x 65 W x 55 D cm
18.5 H x 25.5 W x 21.6 D in

£8,500 GBP ex. VAT
£10,200 GBP inc. VAT



Iceberg, 2025
Porcelain, stone, glaze

TOMONARI HASHIMOTO



Tomonari Hashimoto is based in Shigaraki, and has been exhibited widely across Japan, in both solo and group exhibitions, as well as in competitions. In 2017, Tomonari was artist in residence at the 'Shigaraki Ceramic Cultural Park', which allowed him to make ambitious large-scale work. Although his current work significantly varies in scale. In 2019, Tomonari held his first overseas solo exhibition in Hong Kong, and later the same year he was chosen as the on-site exhibitor at the 'Korean International Ceramic Biennale' in Icheon World Ceramic Center. He was selected as one of the youngest finalists at the 'LOEWE Craft Prize 2019' which was exhibited at the Sogetsu Kaikan in Tokyo. In 2020 his work was acquired by The Victoria and Albert Museum, London, UK for their permanent collection.



Untitled #526, 2025
Stoneware clay, oxide metal

34 H x 34 W x 34 D cm
13.4 H x 13.4 W x 13.4 D in

£5,500 GBP ex. VAT
£6,600 GBP inc. VAT



Untitled #538, 2025
Stoneware clay, oxide metal

40.5 H x 40.5 W x 40.5 D cm
15.9 H x 15.9 W x 15.9 D in

£5,700 GBP ex VAT
£6,700 GBP inc VAT



Untitled #538, 2025
Stoneware clay, oxide metal

LUKE FULLER



Luke Fuller graduated with a Master's degree in Ceramics and Glass from the Royal College of Art, UK, in 2020, having previously completed a BA in 3D Design and Craft at the University of Brighton, UK, in 2018. He has undertaken the notable residency at Shiro Oni Studio, Japan, funded by The Great Britain Sasakawa Foundation, which continues to inform his experimental approach to clay and material processes. The artist has won numerous prestigious awards, including the Nagoya University of Art Grand Prize in Japan, the UK Business Design Centre Designer of the Year Award, and the Anna Maria Desogus Memorial Graduate Award. He has also received the Franz Rising Star Scholarship, the Charlotte Fraser Scholarship, and The Richard Seager Bursary Award. In 2022, the Victoria & Albert Museum, UK, acquired his monumental stoneware and porcelain sculpture *Lode*, which was first presented in his seminal solo exhibition, *Terra-Form*, held at the Gallery in 2021.



Barren, 2022
Stoneware, porcelain

37 H x 47 W x 36 D cm
14.5 H x 18.5 W x 14 D in

£8,100 GBP ex. VAT
£8,900 GBP inc. s/s VAT



Barren, 2022
Stoneware, porcelain



Untitled, 2025
Stoneware, porcelain, glaze

20 H x 20 W x 18 D cm
7.9 H x 7.9 W x 7.1 D in

£3,400 GBP ex. VAT
£3,700 GBP inc. s/s VAT

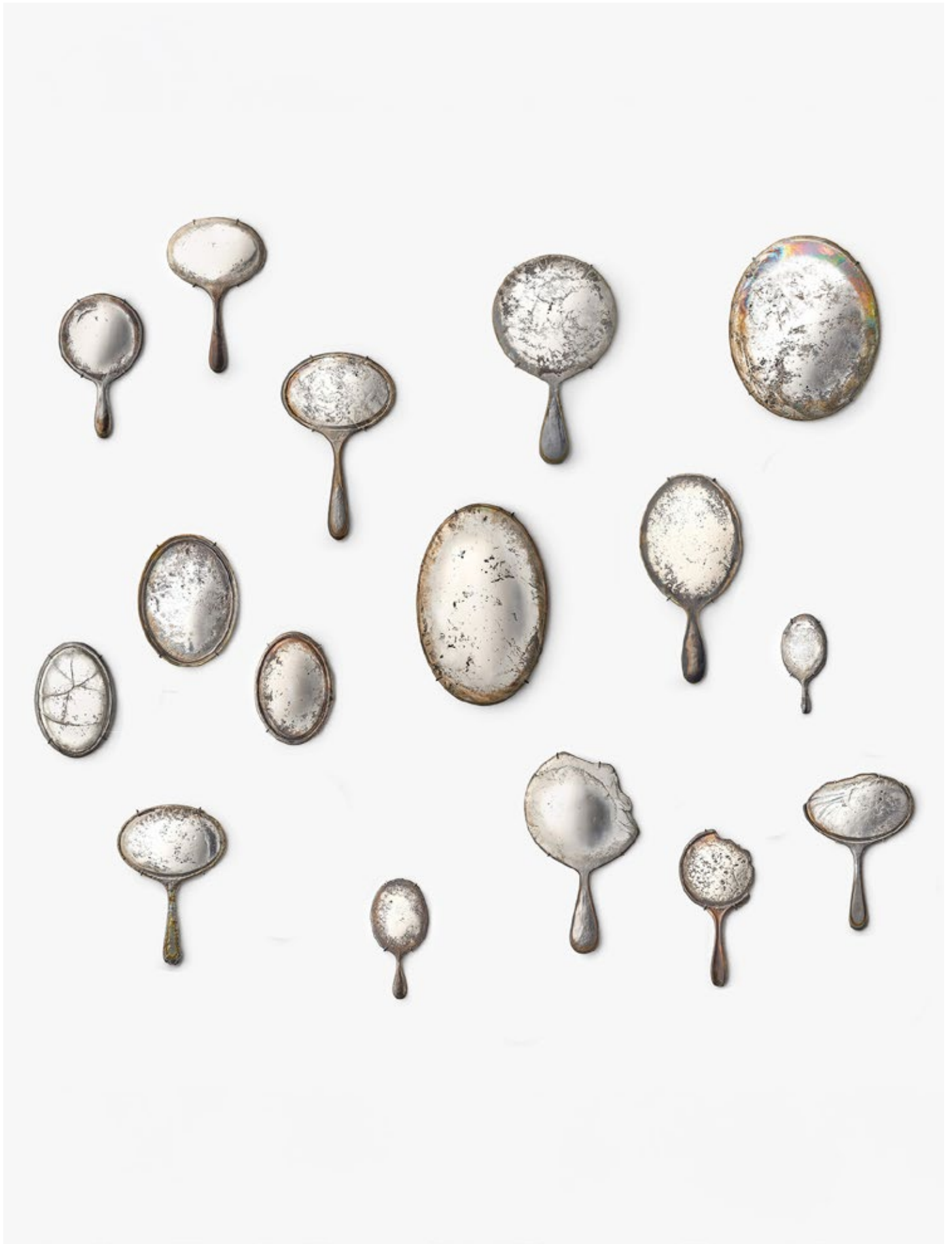


Untitled, 2025
Stoneware, porcelain, glaze

ADI TOCH



Adi Toch has exhibited and taught internationally, and her work is held in major public and private collections including the Victoria and Albert Museum, The Crafts Council, The Goldsmiths' Company, London Museum, Birmingham Museum, Fitzwilliam Museum Cambridge, National Museums Scotland, National Museum Wales, Ulster Museum in Belfast, and The Jewish Museum, New York. Toch is currently a lecturer at the Royal College of Art, London. She was a finalist in the Loewe Craft Prize (2017) and later served on its international judging panel (2019). Her work has been recognised with a Gold Award from the Goldsmiths' Craft and Design Council and the European Prize for Applied Arts. In 2021, she was commissioned by the Gilbert Trust for the Arts to respond to the restitution of a historic gold ewer, resulting in *Place to Place*, now on permanent display at the V&A.



Sculptural mirror wall installation, 2025
Speculum metal alloy (white bronze),
oxidised bronze mount

Largest
35 H x 28 W x 4 D cm
13.7 H x 11 W x 1.5 D in

Reference Image



Large tall oval hand mirror (Cloudy) , 2023
Speculum metal alloy (white bronze),
oxidised bronze mount

34 H x 17 W x 2 D cm
13.3 H x 6.6 W x 0.7 D in

£4,150 GBP ex. VAT
£4,600 GBP inc. s/s VAT



Large Tall Oval Mirror 1 No. 20, 2023
Speculum metal alloy (white bronze),
oxidised bronze mount

31 H x 21 W x 2 D cm
12 H x 8.25 W x .75 D in

£5,400 GBP ex. VAT
£5,900 GBP inc. s/s VAT



Shaped by Light II, 2024
Silver-plated gilding metal, oxidised

30 dia x 15 D cm
11.8 dia x 5.9 D in

£9,200 GBP ex. VAT
£10,150 GBP inc. s/s VAT



Shaped by Light II, 2024
Silver-plated gilding metal, oxidised

MAYUMI ONAGI



Mayumi Onagi is a graduate of art and design with a unique architectural perspective, as well as a deep understanding of the natural world from her early career as a garden designer. Working as an apprentice under Nagatoshi Ohnishi, an honorary Professor of Tokyo University of the Arts, she learnt the Urushi lacquering technique, before becoming an independent artist and teacher in her own right. She has exhibited extensively in Japan and has been part of international exhibitions in Taiwan, Germany and Korea. Mayumi was a finalist for the LOEWE Craft Prize 2022 and a participant in the prize exhibition at Seoul Museum of Craft Art, Korea, she was a recipient of the Grand Prize in 2017 and Silver Prize in 2009 and at the Ishikawa International Urushi Exhibition 2009 held at the Ishikawa Design Center, Japan.



Shine 2, 2025
Urushi lacquer, linen, soil

11.5 H x 14 W x 12 D cm
4.5 H x 5.5 W x 4.7 D in

£2,000 GBP ex. VAT
£2,400 GBP inc. VAT



Moon 3, 2025
Urushi lacquer, linen, soil, wood
(Katsura tree)

14.5 H x 14 W x 14 D cm
5.7 H x 5.5 W x 5.5 D in

£2,400 GBP ex. VAT
£2,900 GBP inc. VAT

SUK KEUN KANG



Having grown up surrounded by nature in the Taebaek mountains of Gangwon Province in eastern South Korea, Sukkeun Kang's crafted artworks have always been rooted in the natural world. From his rural base in Kang Won Do, Kang has developed a unique lacquering technique that allows the beautifully carved timber bowls he creates to have an enduring quality in their functional use. He refers to his process as a "lacquer heat curing method", which has been used in Korea for over one thousand years for practical applications such as waterproofing and insect repellent on armour and helmets. His delicately hand carved, asymmetrical pieces have brought him international acclaim. Kang was shortlisted as a finalist of the prestigious Loewe Craft Foundation Prize in 2020 and the Luxembourg Art Prize in 2021.



Earth's - Rock I, 2025
Lacquer, zelkova, stone

105 H x 40 W x 56 D cm
41.3 H x 15.7 W x 22 D in

£9,100 GBP ex. VAT
£10,900 GBP inc. VAT



Earth's - Rocks II, 2025
Lacquer, zelkova, stone

20 H x 50 W x 37 D cm
11.4 H x 19.7 W x 14.6 D in

£9,100 GBP ex. VAT
£10,900 GBP inc. VAT

SARAH MYERSCOUGH GALLERY

Prices exclude crating & shipping costs.
Quotes available on request.

For sales enquiries, please contact freya@sarahmyerscough.com.

info@sarahmyerscough.com
www.sarahmyerscough.com
[@sarahmyerscoughgallery](https://www.instagram.com/sarahmyerscoughgallery)

The Schoolhouse
18 Balderton Street
Mayfair
London
W1K 6TG
United Kingdom

SARAH MYERSCOUGH GALLERY

Founded in 1998, Sarah Myerscough Gallery is a leading voice in contemporary craft and material-led practice. The gallery represents an international roster of artists working at the intersection of craft, design, and sculpture. Their practices reflect an attunement to cultural relationships with natural materials, particularly wood, combining traditional craftsmanship with innovative approaches that challenge disciplinary boundaries.

Through skills honed in dialogue with material, our artists articulate complex philosophical questions that contextualise our present-day relationship to making. Their practices speak to environmental, social, and cultural representation, often navigating a coexistence with the natural world. Through its programming, the gallery invites ongoing reflection on how we embrace the significance of the handmade to foreground the intelligence of materially grounded and conceptually rigorous works.

The gallery continues to foster long-term collaboration with artists, curators, critics, and institutions, and is committed to expanding the role of craft within contemporary culture, representing sundry works from bespoke furniture collections and architectural applications, to dynamic sculpture and installation. In 2024, it presented its first international exhibition at Galerie56 in New York, and its artists' works are held in significant public and private collections worldwide. The gallery's programme reflects this ethos across exhibitions, public events, and major international fairs, including TEFAF Maastricht, PAD London, FOG Design + Art San Francisco, and Design Miami.

THE SCHOOLHOUSE - NEW MAYFAIR GALLERY

The gallery has moved into its new home at *The Schoolhouse*, 18 Balderton Street in Mayfair. We are thrilled to return with a physical home that features two gallery halls, allowing us to further champion our artists as leading voices in contemporary craft and material-led practice. Our ground floor opens with Ernst Gamperl's first London solo exhibition, while the upper gallery will present Frances Pinnock's seminal mixed-media sculptures.

We look forward to welcoming you at Balderton Street soon.